



# MUNICÍPIO DA ESTÂNCIA BALNEÁRIA DE PRAIA GRANDE

Estado de São Paulo  
SEDUC - Secretaria de Educação

SEMANAS 33 e 34



PONTE DO SABER

Disciplina: Língua Inglesa

9º ano do Ensino Fundamental

## OUR FORESTS!

News Opinion Sport Culture Lifestyle More

### Brazil's Pantanal wetlands on fire - in pictures

▲ Forest fires burn in Poconé in the state of Mato Grosso. Photograph: Gustavo Basso/NurPhoto/Getty Images

Number of fires in world's biggest tropical wetlands more than doubled in first half of 2020 compared with last year

Thu 17 Sep 2020 07:00 BST

1.710

Firefighters work to put out a wildfire in the Porto Jofre region in the Pantanal wetlands in Mato Grosso state, Brazil, on Monday. Out-of-control fires are destroying vast areas of vegetation and killing wildlife, putting one of the world's most diverse ecosystems in jeopardy. (Amanda Perobelli/Reuters)

<https://www.theguardian.com/environment/gallery/2020/sep/17/brazil-pantanal-wetlands-on-fire-in-pictures>

1. Sobre o que é a imagem apresentada?

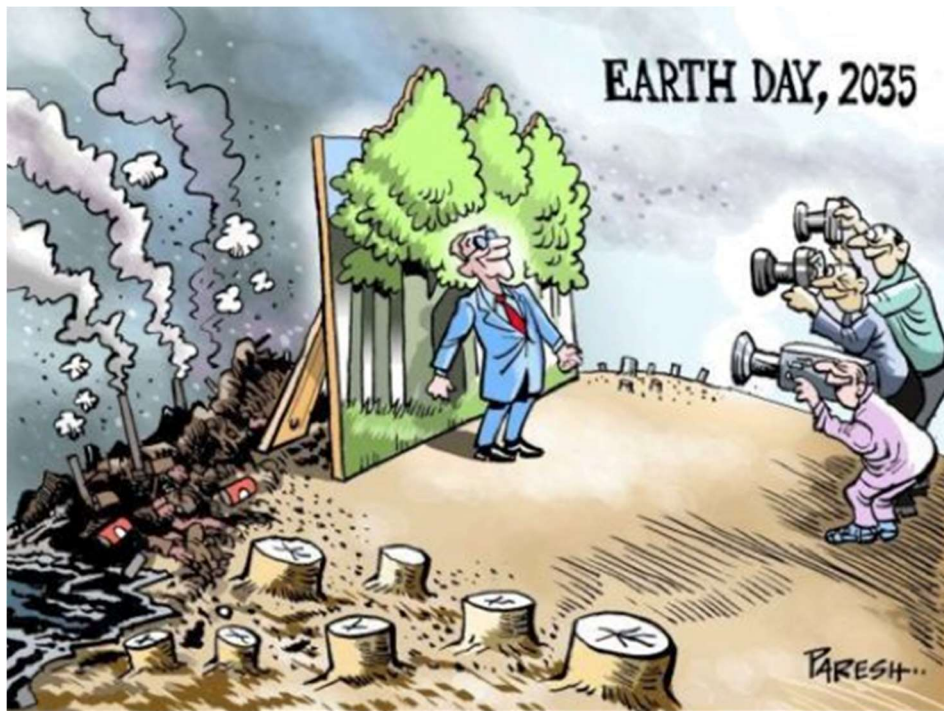
---

---

2. Qual a tradução das palavras?

- |                 |                        |
|-----------------|------------------------|
| a) firefighters | ( ) vida selvagem      |
| b) wildfire     | ( ) perigo             |
| c) wetlands     | ( ) bombeiros          |
| d) wildlife     | ( ) incêndio florestal |
| e) jeopardy     | ( ) áreas alagadas     |

Analise o *cartoon* a seguir:



Fonte: [simrinsworld.wordpress.com/](http://simrinsworld.wordpress.com/)

3. À qual data comemorativa se refere o *cartoon*?

---

4. Qual relação é possível estabelecer entre a imagem apresentada e o *cartoon*?

---

---

---

---

---

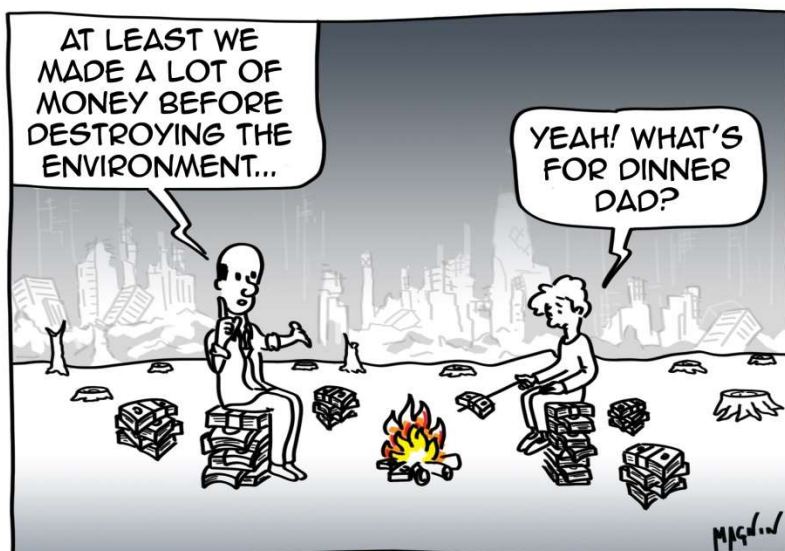


Illustration by Alexandre Magnin - [Sustainabilityillustrated.com](http://Sustainabilityillustrated.com)

Fonte: [sustainabilityillustrated.com/](http://sustainabilityillustrated.com/)

5. Qual é a mensagem do *cartoon*?

---

---

---

---

---

---

---

---

---

---